

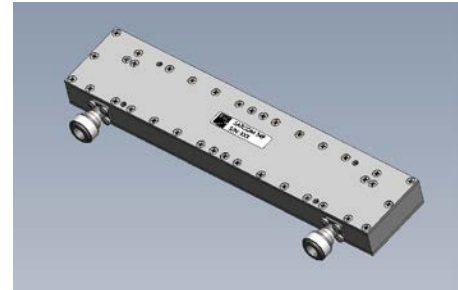
# SATCOM 349-01

BSC Filters Limited  
10-11 Stirling Park, Bleriot Way  
Clifton Moor, York, YO30 4WU. UK  
Telephone: +44 (0) 1904 694250  
E-mail: [sales@bscfilters.com](mailto:sales@bscfilters.com)  
Web-site: [www.bscfilters.com](http://www.bscfilters.com)

## S BAND RECEIVE FILTER

When receiving S Band satellite downlink TT&C ranging and payload data, the BSC SATCOM 349 has been specifically designed to offer compact size, low insertion loss and high rejection of all HF, VHF and SHF channels outside its passband.

Passband:	2.2 to 2.29 GHz
Insertion Loss:	0.8 dB max
Return Loss:	17 dB min
Rejection from 10 MHz to 2.11 GHz:	110 dB min
Rejection from 2.4 to 3.0 GHz:	90 dB min
Power Handling:	20 W max
Operating temperature:	-20 to 50°C
Connectors:	N-type Female
External Finish:	Matt Black



## Outline:

