

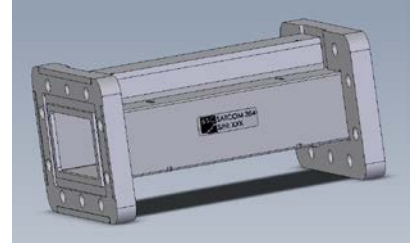
# SATCOM 354-01

BSC Filters Limited  
10-11 Stirling Park, Bleriot Way  
Clifton Moor, York, YO30 4WU. UK  
Telephone: +44 (0) 1904 694250  
E-mail: [sales@bscfilters.com](mailto:sales@bscfilters.com)  
Web-site: [www.bscfilters.com](http://www.bscfilters.com)

## C BAND RECEIVE FILTER

BSC's excellence in filter design has enabled it to offer a C Band receive filter with waveguide flanges, for ease of integration into a waveguide feed arm assembly; but with extended rejection bands allowing use in congested EM environments, such as those found aboard maritime platforms where physically adjacent high power transmitters may lead to a desensitisation of the C Band LNB.

Passband:	3.7 to 4.2 GHz
Insertion Loss at Fc:	0.5 dB max
Insertion Loss at Bandedge:	1.25 dB max
Return Loss:	14 dB min
Rejection at 3.65 GHz:	25 dB min
Rejection at 4.25 GHz:	25 dB min
Power Handling:	5 W max
Operating temperature:	-20 to 50°C
Connectors:	CPR229F Flange CPR229G Flange
External Finish:	Gloss White



### Outline:

